

[Reina Flores-Hansen, M.Ed.](#)

Project Director III

562-922-6243



**Los Angeles County  
Office of Education**

[Gina M. Newton, PhD](#)

CTE Coordinator II

562-922-6709

[Anne M. Welsh-Treglia, Ed.D.](#)

CTE Coordinator II

K12 SWP Pathway Coordinator, Cerritos College

562-922-6541

Office of Career Technical Education

# 21st Century CTE Careers Symposium

## Industry Sector: Transportation

Thursday, April 7, 2022



# Norms & Information

- This event is recorded.
- Please remain muted.
- Comments – use the Chat.
- ?? Questions - place two (2) question marks in front.  
*Our CTE Coordinator, Dr. Anne Welsh-Treglia, is standing by to share them.*
  - Please complete the survey in the Chat.

# Objectives

## Based on the 12 Essential Elements of A High-Quality Career and College Pathway and the State Priorities

- **Support** Student-Centered Delivery of Services.
- **Explore** Equity and Access in Career Opportunities.
- **Inform** A High-Quality, Integrated Curriculum and Instruction.
- **Provide** Skilled Instruction and Educational Leadership Informed by Professional Learning.
- **Generate** Career Exploration and Student Supports.
- **Promote** Strong Partnerships with Industry.

<https://www.cde.ca.gov/fg/fo/r17/cteig2020attach4.asp>

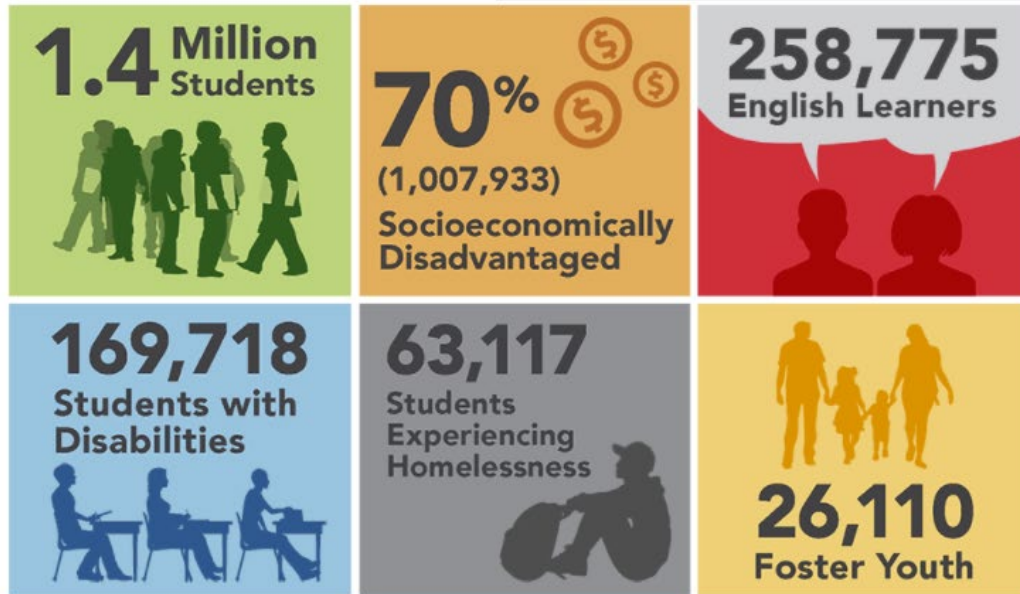
Los Angeles  
County Office  
of Education

LACOE

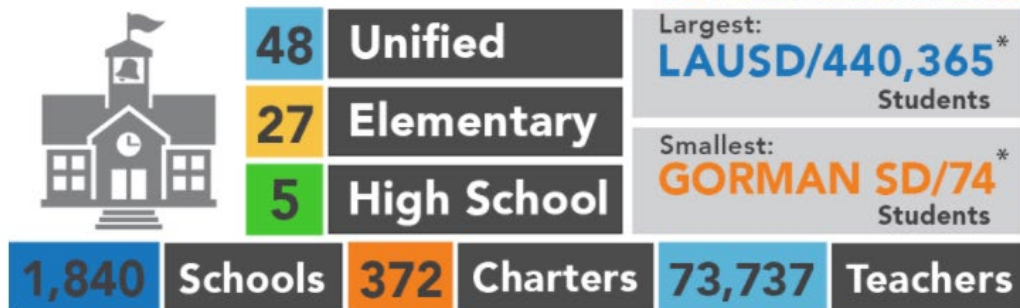
12830 Imperial Hwy.  
Education Center West  
Downey, CA 90242

[lacoedu.edu](http://lacoedu.edu)

Los Angeles County



80 K-12 School Districts



\* Does not include charter schools

Total K-12 Enrollment:

1.4 Million Students

# The California 15 Industry Sectors Careers



Agriculture &  
Natural Resources



Building Trades and  
Construction



Arts, Media, and  
Entertainment



Education, Child  
Development,  
and Family Services



Energy and Utilities



Engineering & Design  
Industry



Fashion & Interior Design



Finance and Business



Health Science &  
Medical Technology



Hospitality, Tourism, &  
Recreation



Information Technology



Manufacturing &  
Product Development



Marketing, Sales, &  
Service



Public Services



Transportation

# California High-Speed Rail Authority



**Yaqeline Castro**

Student Outreach Liaison  
California High-Speed Rail Authority  
[yaqeline.castro@hsr.ca.gov](mailto:yaqeline.castro@hsr.ca.gov)



**Crystal Royval**

Public Information Officer  
California High-Speed Rail Authority  
Southern California Region  
[crystal.royval@hsr.ca.gov](mailto:crystal.royval@hsr.ca.gov)



**CALIFORNIA**  
High-Speed Rail Authority

**Welcome Los Angeles County of  
Education**

**April 7, 2022**

# 21<sup>st</sup> Century High-Speed Rail Careers

## Today's Agenda

- California High-Speed Rail, It's Happening
- High-Speed Rail in Southern California
- I Will Ride - Educate, Engage and Inspire
- 21<sup>st</sup> Century High-Speed Rail Careers
- How can we support you?

## Today's Speakers



Yaqeline Castro  
Student Outreach  
Specialist

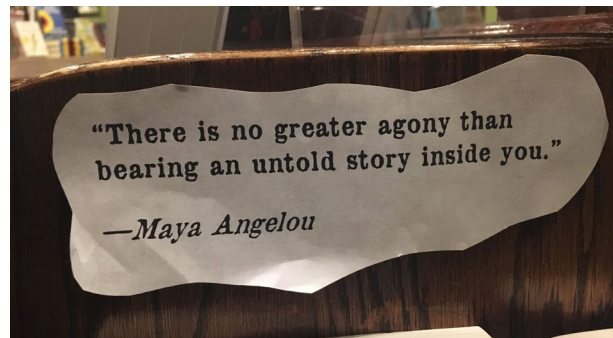


Crystal Royval  
Public Information  
Officer



# Yaqeline Castro – Student Outreach Specialist

A little bit about me!



# High-Speed Rail – It's Happening

- 7,500+ Construction Jobs Created Since Construction Began
  - » 1,000+ Construction Workers Dispatched to Sites Daily
  - » 34 Active Construction Sites
- 698 Small Businesses Employed
  - » 224 are Disadvantaged Business Enterprises
  - » 79 Disabled Veteran Business Enterprises
- CA High-Speed Rail will be 100% Electric Run on Renewable Energy
  - » Currently Using Tier IV Equipment
  - » Will Reduce VMT by taking 400k cars off the road annually



# Building Block Approach

## Today:

- » 119 Miles Under Construction
- » Environmentally Clearing Full 500 Miles Between SF and LA (Approximately 300 Miles Cleared To Date)
- » Bookend Projects:
  - Caltrain Electrification
  - LAUS Improvements
  - Grade Separations
- » Station Planning
- » MOU with Brightline West



# Crystal Royval – Public Information Officer

## A little bit about me!



California High-Speed Rail Authority

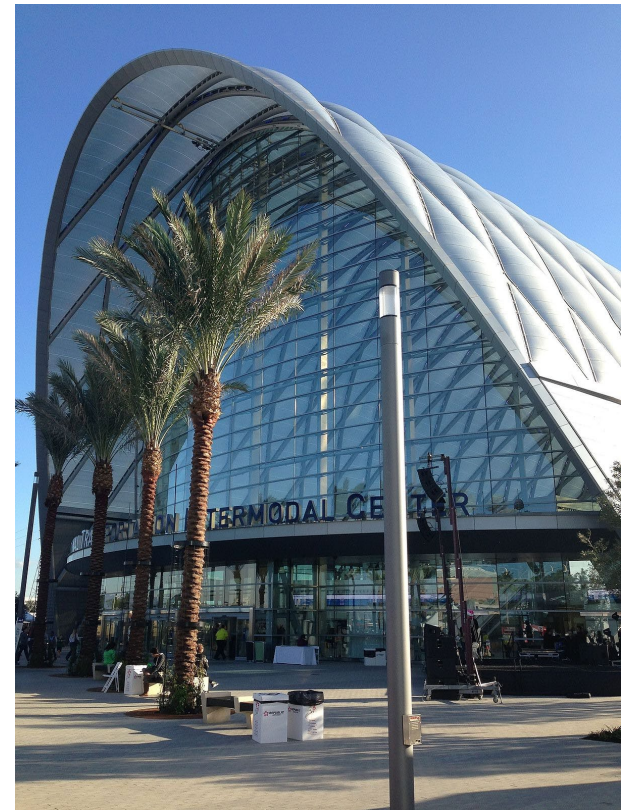
10,418 followers  
1d · 🌐



Information Officer **Crystal Royval** is honoring her grandfather's legacy by working on the largest infrastructure project in the nation. She's excited about how high-speed rail will change the way Californians move, live, and work. [#HispanicHeritageMonth](#)



# High-Speed Rail in Southern California



# Connecting Southern California

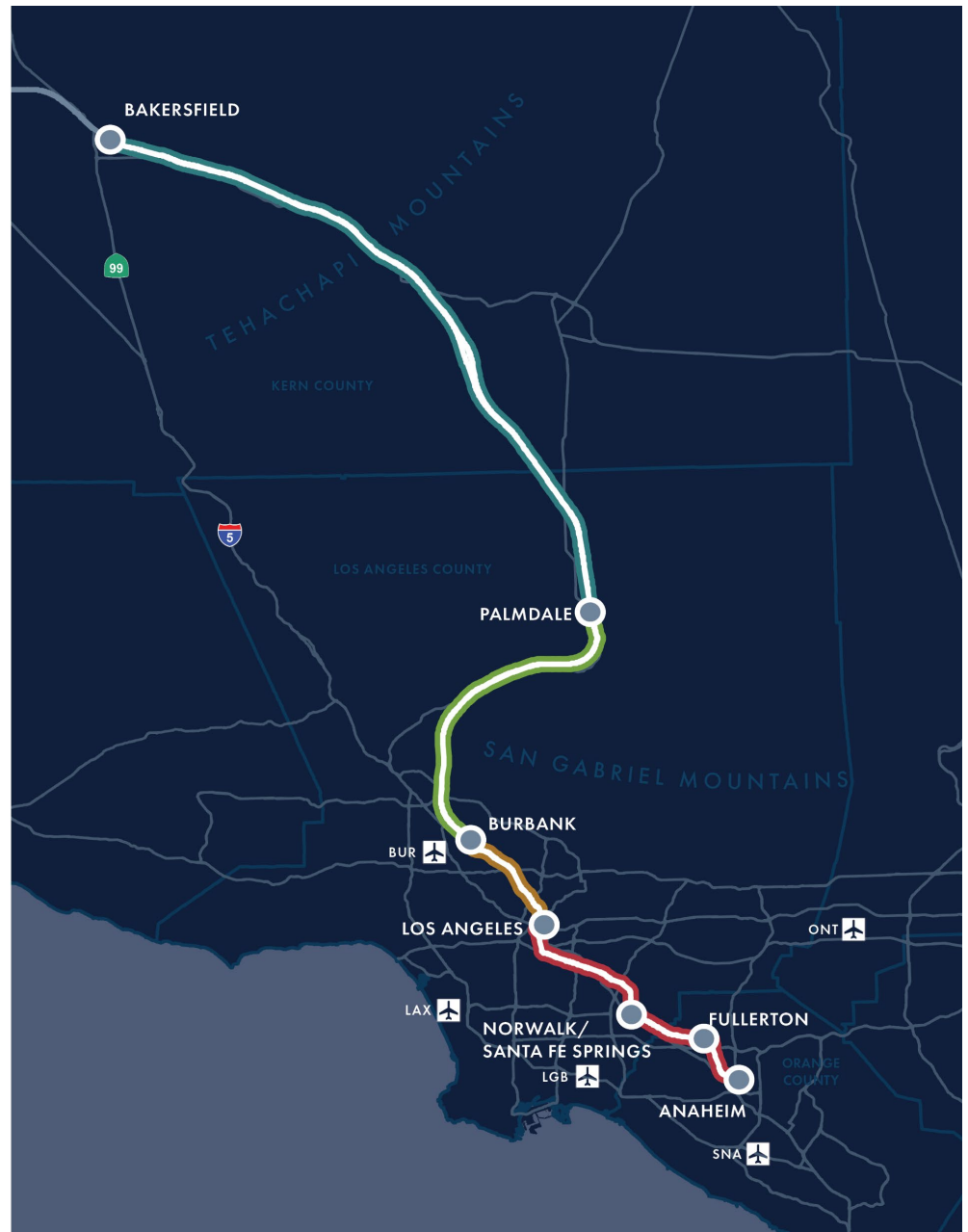
## High-speed rail in Southern California

### Phase I:

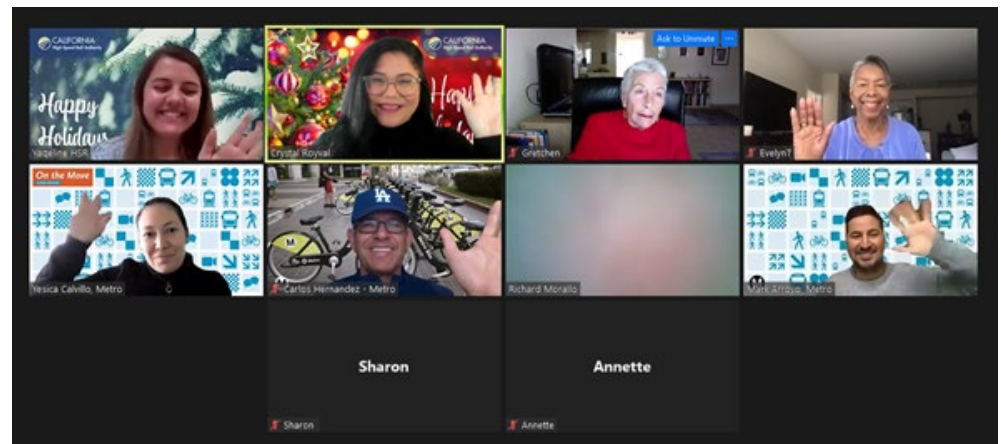
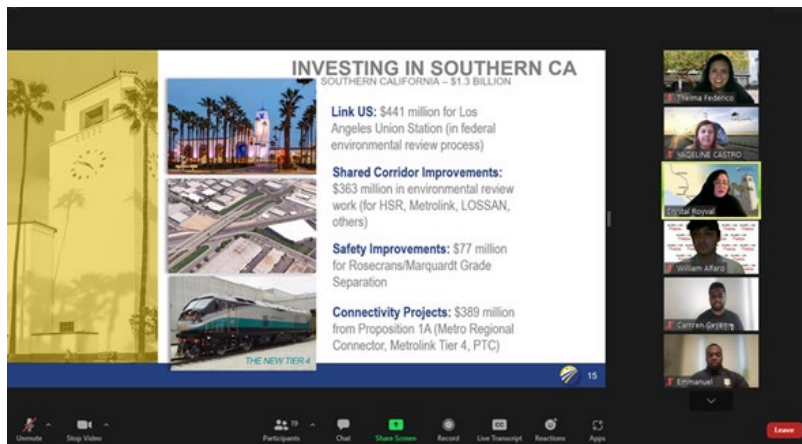
- » Four Project Sections – 164 miles
  - Bakersfield to Palmdale
  - Palmdale to Burbank
  - Burbank to Los Angeles
  - Los Angeles to Anaheim
- » 6 station locations
- » Plane to train connection at Hollywood Burbank Airport station
- » 23 million people
- » Across 4 counties
- » 4 of 10 largest cities in the state
- » Two connectivity projects: Link US & Rosecrans/Marquardt Grade Separation

### Phase 2:

- » Los Angeles to San Diego = 167 miles
- » Across 2 counties



# Outreach and Stakeholder Engagement in Southern California





# I Will Ride – Educate, Engage & Inspire





# Student Outreach and Education

## I Will Ride Student Outreach Program

- I Will Ride is a student education and outreach initiative designed to inform, engage and connect interested students to the high-speed rail program.
- The I Will Ride Program provides students opportunities to be student leaders representing and engaging with the California High-Speed Rail
- <https://hsr.ca.gov/i-will-ride/>

## K-12, College and University Student Outreach

- Students are essential to the success of high-speed rail. We work to provide resources and connections to the project.
- <https://hsr.ca.gov/communications-outreach/student-outreach/>



# Outreach Event with Fresno City College

<https://www.youtube.com/watch?v=154ZwSxt36s&list=PLs98D7m5XXEES0htFh7LICxa3NzRnxntG>



# Student and Classroom Resources

- Webinars & YouTube Videos
- HSR.CA.GOV
- BuildHSR.com
- Factsheets
- Capstone and Senior Projects
- Project Updates
- Major Reports
  - » Business Plan
  - » Sustainability Report
  - » Economic Impact Report





# Careers of the 21<sup>st</sup> Century at High-Speed Rail

- 21<sup>st</sup> Century High-Speed Rail Career



# Career Opportunities with California High-Speed Rail

- The construction of high-speed rail is creating job opportunities today and job opportunities that will extend well into the 21<sup>st</sup> century
- There are diverse and dynamic career opportunities on a mega project like the California high-speed rail.



# 21<sup>st</sup> Century High-Speed Rail Careers

- State Employment
  - » Job Security
  - » Benefits
  - » Upward Mobility
- Major Contracts and Procurement
  - » Construction Packages (1,2-3 & 4)
  - » Early Train Operator
  - » Rail Delivery Partner
  - » Track and Systems
- Small Businesses
  - » 30% Small Business Goal
  - » Connecting small businesses to prime contractors
  - » Resources



# 21<sup>st</sup> Century High-Speed Rail Careers

## Construction and Building Trades

- High-Speed Rail offers good paying, union construction jobs with benefits
- An ironworker for the California High-Speed Rail can earn close to \$50/hr
  - » Beyond the salary, this career comes with benefits like healthcare for family members and a pension
- As construction continues, there will be a high demand for electricians, cement workers, steel laborers, ironworkers, and more.
- Many construction workers credit working on high-speed rail with:
  - » Helping them realize upward mobility within their career path
  - » Giving them the ability to purchase their first home
  - » Providing greater financial stability and security than similar non-union jobs
- Individuals interested in helping build the first high-speed rail system in the nation should visit: <https://hsr.ca.gov/jobs/>
- Selma Workforce Training Center



<https://www.youtube.com/watch?v=cpQJKkhhPcM&list=PLs98D7m5XXEE2uF0bAbdInHBMAZAYvzT->

# 21<sup>st</sup> Century High-Speed Rail Careers

## Communications and Outreach

- Another essential function the Authority performs is communicating the project's progress and benefits to the public
- CalCareers.ca.gov
- Salaries range depending on classification. Entry level state rates are competitive and provide various benefits.
  - » Retirement/Pension
  - » Union
  - » Job Security
- A wide variety of staff make contributions to this effort
  - » Information officers
  - » Outreach specialists
  - » Videographers
  - » Graphic designers
  - » Social media managers





# Stay Connected

Newsletters, Social Media and Webpages

HSR.CA.GOV



BuildHSR.com



Follow Us On  
Social Media!



@cahsra



/CaliforniaHighSpeedRail



/CAHighSpeedRail



@cahsra



/california-high-speed-rail-authority

# Open Discussion

- What would benefit you and your students?
- As a state agency, what resources can we provide to teachers and students that we aren't already providing – given where we are.
- Do you prefer virtual or in-person presentations?
- How can we get the students excited about the project?

# Transportation Career Academy Program (TCAP) Preparing the Next Generation Transportation Workforce



**Marion Jane Colston, M.Ed.**

Senior Director

Strategic and Organizational Planning

LA Metro

[ColstonM@metro.net](mailto:ColstonM@metro.net)

**Shannon I. McClain**  
Transportation Associate I  
Next Generation Workforce  
Programs  
LA Metro  
[McclainS@metro.net](mailto:McclainS@metro.net)



**Deanna M. Matsumoto**

Principal Talent Development Specialist

Next Generation Workforce

LA Metro

[MatsumotoD@metro.net](mailto:MatsumotoD@metro.net)



**Metro**



Los Angeles County  
Office of Education



**LACOE Career Technical Education Unit  
21st Century Careers - Transportation  
April 7, 2022; 10:00 am – 12:00 noon**

**DEANNA MATSUMOTO, Principal Talent Development Specialist, Next Generation Workforce**

**SHANNON McCLAIN, Transportation Associate, Next Generation Workforce**

**MARION COLSTON, Senior Director, Strategic and Organizational Planning**



**Metro**

# **Transportation Career Academy Program (TCAP) Preparing the Next Generation Transportation Workforce**

**Transportation Gateway/Next Generation Workforce Programs**

**Chief People Office**

# Agenda

- 1. Why Transportation Careers?**
- 2. Preparing the Next Generation Transportation Workforce**
  - a. Industry Recommendations**
  - b. Best Practices to Engage and Retain Students**
- 3. 2022 Transportation Career Academy Program (TCAP) Overview**

# President Biden's Bipartisan Infrastructure Law

President Biden's  
Bipartisan Infrastructure Deal means:

## **MORE JOBS**

The Bipartisan Infrastructure Deal will support more than **700,000 new jobs** a year, including:

- ✔ 175,000 **manufacturing jobs**
- ✔ 175,000 **construction jobs**
- ✔ 100,000 **transportation jobs**

# Sustainable, Long-Term Careers for our Students



No More  
Lead Pipes



High-Speed  
Internet Access



Better Roads  
and Bridges



Investments in  
Public Transit



Upgrade Airports  
and Ports



Investment in  
Passenger Rail



Network of Electric  
Vehicle Chargers



Upgrade Power  
Infrastructure



Resilient  
Infrastructure



Investment in  
Environmental  
Remediation



# Governor Newsom's Executive Order N-79-20: Carbon Neutrality

*It shall be a goal of the State that 100 percent of in-state sales of new passenger cars and trucks will be zero-emission by 2035. It shall be a further goal of the State that 100 percent of medium- and heavy-duty vehicles in the State be zero-emission by 2045 for all operations where feasible....*

**Our current students will be leaders in their fields when both California and the US are slated to be carbon neutral around 2040 to 2050.**

# Metro Entry-Level Training Program (ELTP) Staff Career and Workforce Development Interests

Civil Rights and  
Inclusion/DEI

GIS/Urban  
Informatics/Data  
Visualization

Aviation and  
aeronautical  
engineering

Active  
transportation  
planning  
(bike/pedestrian  
planning)/sustainable  
mobility

User experience (UX  
design)/Tech jobs

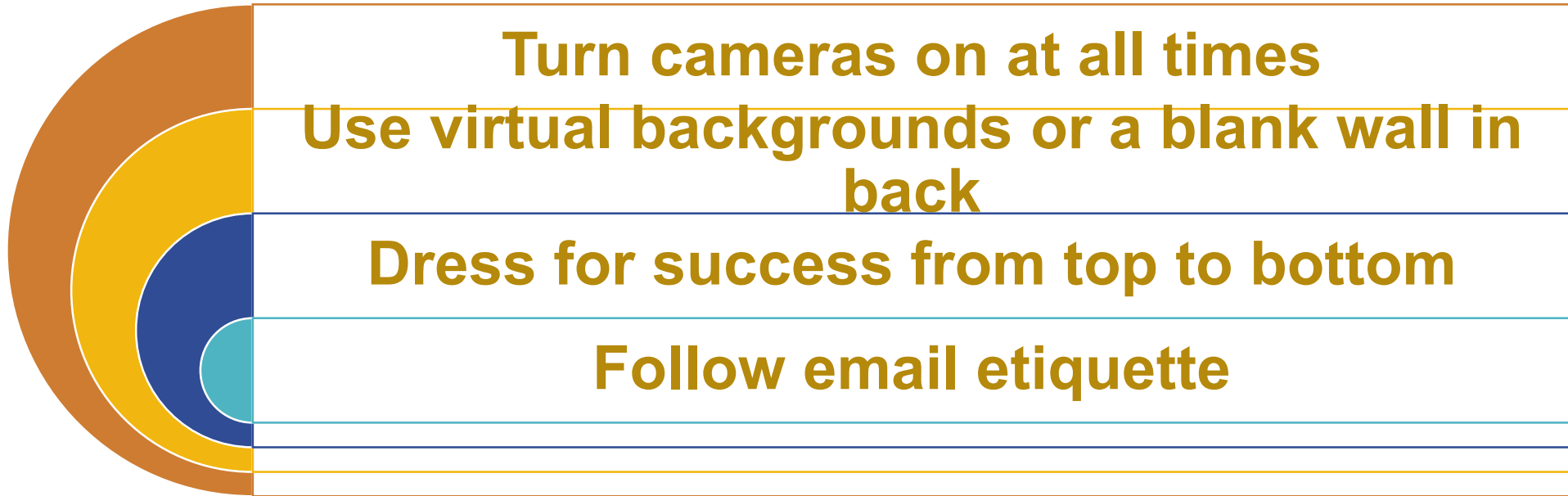
Green infrastructure  
and urban planning

professional  
journeys

day-to-day work  
life of professionals



# Virtual Readiness for Workforce Success: Industry/Employer Recommendations





# Basic Resumes: Use free Google or Page Templates

**Introduce a simple resume that is appropriate for a student with or without formal work experience.**

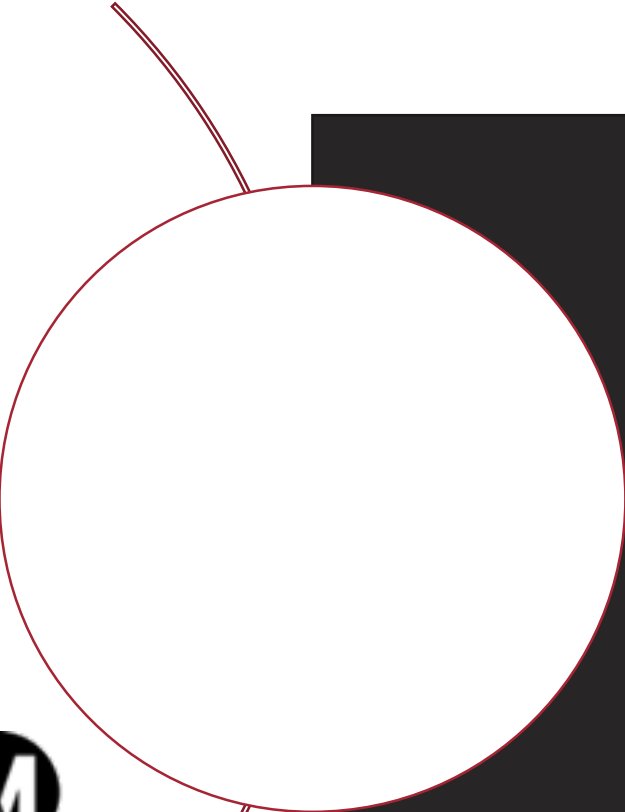
## **Suggestions for Activities:**

1. Sports
2. School clubs (including music)
3. Volunteer experience
4. School/club/sports/volunteer leadership positions
5. Language schools
6. Organizations outside of school
7. Childcare responsibilities
8. Supporting family members at their workplace

**Skills: Languages (include speaking and writing ability)**

**Please teach students how to edit their resumes, download to create pdfs, and label them with a naming convention.**

# For high school students: Required skills for online applications

- 
- **Downloading documents as pdfs**
  - **Using naming conventions for uploading files**
  - **Transcripts: Differentiating between cumulative and semester transcripts**
  - **Punctuality: Submitting applications on time**

# Short instructional videos to submit required pre-employment forms

<https://www.youtube.com/watch?v=99BPGQNUJV0>

W-4 FORM INSTRUCTIONS VIDEO  
FY22 TCAP SUMMER INTERNSHIP

▶ ⏪ 🔊 0:02 / 6:29 CC ⚙️ 📺 🖥️ 🗑️

# Best Practices to Engage Students: Google Site for Pre-Employment Documents with instructional videos



<https://sites.google.com/view/2022-tcap-final-required-docum/important-dates>

# Best Practices to Engage Students: Google Site for Summer Program



<https://sites.google.com/view/tcap-summer-internship-team-3/home>



# TCAP 2022 Update: Eligible Applicants

	Asian	Black or African American	Hispanic or Latino	White	Do Not Wish to Provide	Two or More Races	Total
<b>Male</b>	33	6	49	3	2	3	96
<b>Female</b>	38	12	39	4	2	2	97
<b>Do Not Wish to Provide</b>	2	0	4	1	2	1	10
<b>Non-Binary</b>	0	0	1	0	0	0	1
<b>Total</b>	73	14	92	7	6	6	<b>204</b>
<b>Percentages</b>	<b>36%</b>	<b>7%</b>	<b>45%</b>	<b>3%</b>	<b>3%</b>	<b>3%</b>	



**Metro**

\*US Census Bureau 2019 Statistics for LA County

Asian: 15%; Black or African American: 8%; Hispanic/Latino: 51%; White: 26%;  
Two+: 4%

# Questions, Comments, and Suggestions



Los Angeles County  
Office of Education



**THANK YOU!**



[McClainS@metro.net](mailto:McClainS@metro.net)

[MatsumotoD@metro.net](mailto:MatsumotoD@metro.net)

[ColstonM@metro.net](mailto:ColstonM@metro.net)



Metro

# 21<sup>st</sup> Century Automotive Careers

## Ken Cook

CTE Automotive Instructor  
SkillsUSA Advisor  
Norwalk High School  
Norwalk La Mirada USD  
[KeCook@nlmusd.k12.ca.us](mailto:KeCook@nlmusd.k12.ca.us)

## David M. Olea Ed.D

Principal  
Norwalk High School  
[dolea@nlmusd.k12.ca.us](mailto:dolea@nlmusd.k12.ca.us)



<https://youtu.be/POZxLyolo8s>



## Reflection into Action

Place in the Chat:

What is the key takeaway from this workshop that you will put into action.

# 2022 CTE Professional Development Series



LA Metro  
(Pre-COVID) CTE Teacher Professional Development Event  
February 13, 2019

**Thursday, April 14, 2022**

10:00 am - 11:00 am

[It's About Time!](#) CTE Webinar Series  
**Cybersecurity**

**Thursday, April 21, 2022**

2:00 pm - 4:00 pm

[5th Annual CTE College & Career-Ready Middle School Symposium 2022](#)

**Thursday, May 12, 2022**

10:00 am - 11:00 am

[It's About Time!](#) CTE Webinar Series  
**CTE Student Voices**

**Thursday, May 19, 2022**

2:00 pm - 4:00 pm

[2nd Annual CTE DEIA \(Diversity, Equity, Inclusion, Access\) Symposium](#)

**Thursday, May 26, 2022**

10:00 am - 12:00 noon

[21st Century Careers Symposium:](#)  
Industry Sector Focus: Healthcare

**Thursday, June 9, 2022**

10:00 am - 11:00 am

[It's About Time!](#) CTE Webinar Series  
**TBD**

## **LACOE Thursdays @ 3**

### **System of Support Series 3:00-4:30 pm**

Practical foundational resources of support for Tier 1 first best instruction using Universal Design for Learning (UDL)



Anchor General Education and Special Education within one Multi-Tiered System of Support

- Engage in a culture of continuous improvement and shared learning across LA County.
- Determine areas of focus for the series.
- Receive coordinated resources and information.
- Share resources and key learnings with each other.
- Identify future needs.

**Register Today**

**<http://lcoe.k12oms.org/2578-202897>**

If you have any questions or would like additional information, feel free to contact the Center for District Capacity Building at [CDCB@lcoe.edu](mailto:CDCB@lcoe.edu)

# Career Technical Education (CTE) Team UNITE

## Reina Flores-Hansen

**Project Director III**  
**(562) 922-6243**

## Silvia P. Alva

Division Secretary  
(562) 922-6850

## Lucy Domingo

CTE & AE  
Credential Specialist  
(562) 922-6798

## Christina Fuentes

CTE & AE Credential  
Specialist  
(562) 922-6744

## Linda Matzek

Coordinator II  
(562) 922-6798

## Gina M. Newton, Ph.D.

Coordinator II  
(562) 922-6709

## Sheila Lewis, M.S.

Administrative Analyst  
(562) 922-6324

## Anne Welsh-Treglia, Ed.D.

Coordinator II  
(562) 922-6541

## Rosa Valdez

Contract Consultant  
(562) 922-6850

## Nancy Wagner, Ed.D.

Contract Consultant  
(562) 922-6335

The Los Angeles County Office of Education Office of Career Technical Education is here to assist you with your credentialing, professional development, and program needs.  
We look forward to continued opportunities to collaborate.

~The LACOE CTE Team UNITE