

[Reina Flores-Hansen, M.Ed.](#)

Project Director III

562-922-6243



**Los Angeles County  
Office of Education**



[Gina M. Newton, PhD](#)

CTE Coordinator II

562-922-6709

Office of Career Technical Education

**It's About Time!**

*Delete the Divide*

Thursday, November 18, 2021

Welcome!



# Norms & Information

- This event is recorded.
- Please remain muted.
- Please use the monitored Chat for comments and questions.  
*Our CTE Administrative Analyst, Sheila Lewis, M.S.,  
will share those as time permits.*
- This (*edited*) recording, PowerPoint, current CTE Newsletter,  
and a post-evaluation survey will be emailed.

# Objectives

## **Address**

causes for the urgent need for student support and services.

## **Acknowledge**

the effects of gaps in equitable provisions COVID has further revealed.

## **Demonstrate Suggested Resolutions**

for student, educator, and community needs.

## **Celebrate**

positive change.

Los Angeles  
County Office  
of Education

LACOE

12830 Imperial Hwy.  
Education Center West  
Downey, CA 90242

[lacoedu.edu](http://lacoedu.edu)

Los Angeles County



1.4 Million  
Students



70%

(1,007,933)

Socioeconomically  
Disadvantaged



258,775  
English Learners



169,718  
Students with  
Disabilities



63,117  
Students  
Experiencing  
Homelessness



26,110  
Foster Youth

80 K-12 School Districts



48

Unified

27

Elementary

5

High School

Largest:

LAUSD/440,365\*  
Students

Smallest:

GORMAN SD/74\*  
Students

1,840

Schools

372

Charters

73,737

Teachers

\* Does not include charter schools

Total K-12 Enrollment:

1.4 Million Students



## LA County Internal Services Department (ISD)

An initiative led by the County of Los Angeles to **empower youth, young adults**, and small businesses in **underserved communities** who are **adversely impacted by the digital divide**.

Partnerships have been established with public, private, academic, and community-based organizations to unify efforts in ensuring that members have direct **access, training** and **support** services in modern technologies.

The coalition of partners will provide existing programs, services and resources to connect youth, young adults and small businesses to **opportunities in technology** that enable **pathways to personal development and economic growth**.

<https://www.deletethedivide.org/>

### **Selwyn Hollins, Director**

Los Angeles County Internal Services Department (ISD)

Work: (323) 267-2101

1100 N. Eastern Avenue, 2<sup>nd</sup> Floor

Los Angeles, CA 90063

[SHollins@isd.lacounty.gov](mailto:SHollins@isd.lacounty.gov)

### **Jamel Thomas, Program Administrator**

Los Angeles County Internal Services Department (ISD)

Tel: (562) 417-2469

[JThomas4@isd.lacounty.gov](mailto:JThomas4@isd.lacounty.gov)

*with*

### **Aravinda Edussuriya, Management Fellow**

County of Los Angeles Economic & Workforce Development Department

Phone: (323)-449-5720

510 S. Vermont, Los Angeles, CA 90020

[aedussuriya@wdacs.lacounty.gov](mailto:aedussuriya@wdacs.lacounty.gov)

*and*

### **Michael Thomas, Business Services Representative**

Pomona Valley America's Job Center

1460 E. Holt Ave. Ste. #130 Entrance #3

Pomona, CA 91767

Cell: (213) 440-7013

Direct: (909) 326-4786

Fax: (909) 622-5402

[mthomas@mcscareergroup.com](mailto:mthomas@mcscareergroup.com)

# Resources

Delete the Divide:  
[www.deletethedivide.org](http://www.deletethedivide.org)


LACOE Homepage reference:  
<https://www.lacoe.edu/Technology/Delete-the-Digital-Divide>

America's Job Centers of California:  
<https://www.ajcc.lacounty.gov/>

Use this link to test the address:

<https://experience.arcgis.com/experience/cb6759c16c9c4093b5254f065828fb39>

If the address is in the purple area on the internet access chart it is covered.



**ISD** INTERNAL SERVICES DEPARTMENT  
COUNTY OF LOS ANGELES

**DELETE THE DIVIDE™**

LOS ANGELES COUNTY  
**DELETE THE DIVIDE**

**BECOME A MEMBER**  
*Who Can Participate?*

- ✓ Membership is FREE
- ✓ Must be between ages 12 to 24
- ✓ Live in the County of Los Angeles
- ✓ Reside within an underserved community with minimal or no internet access

*Membership Benefits*

- FREE access to online, self-paced training courses
- Access to member-only portal
- Develop usable tech skills
- Earn technical certifications and badges
- Conferences, tours and special events
- Academic scholarships and paid internships
- Job opportunities
- Industry connections and more!

**CERTIFICATE SCHOLARSHIPS**  
*Exclusively for Members*

- ✓ Complete certificate in 3-6 months
- ✓ No experience or degree required
- ✓ FREE self-paced online training
- ✓ Qualify for in-demand careers
- ✓ Earn multiple certificates

**Google Career Certificates**

- Data Analytics Professional Certificate
- IT Support Professional Certificate
- IT Automation with Python Professional Certificate
- Project Management Certificate
- UX Design Professional Certificate
- Associate Android Developer Certification

**f Career Certificates**

- Social Media Marketing Professional Certificate

[deletethedivide.org](http://deletethedivide.org) [info@deletethedivide.org](mailto:info@deletethedivide.org)

[f](#) [@](#) [t](#) [v](#) [in](#)



# County of Los Angeles Economic & Workforce Development Department

---

**Aravinda Edussuriya**  
[aedussuriya@wdacs.lacounty.gov](mailto:aedussuriya@wdacs.lacounty.gov)



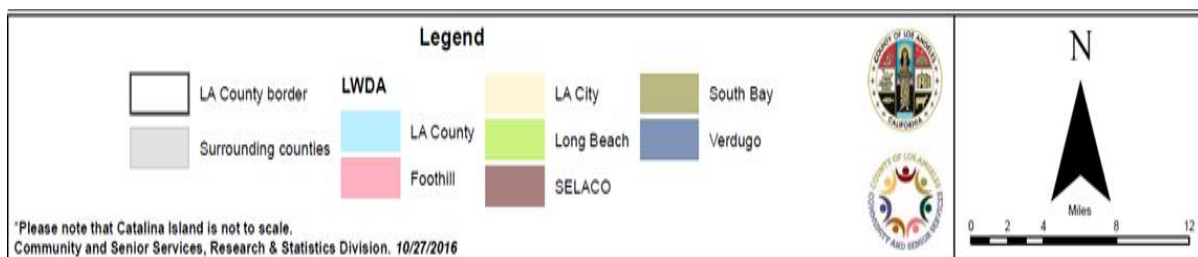
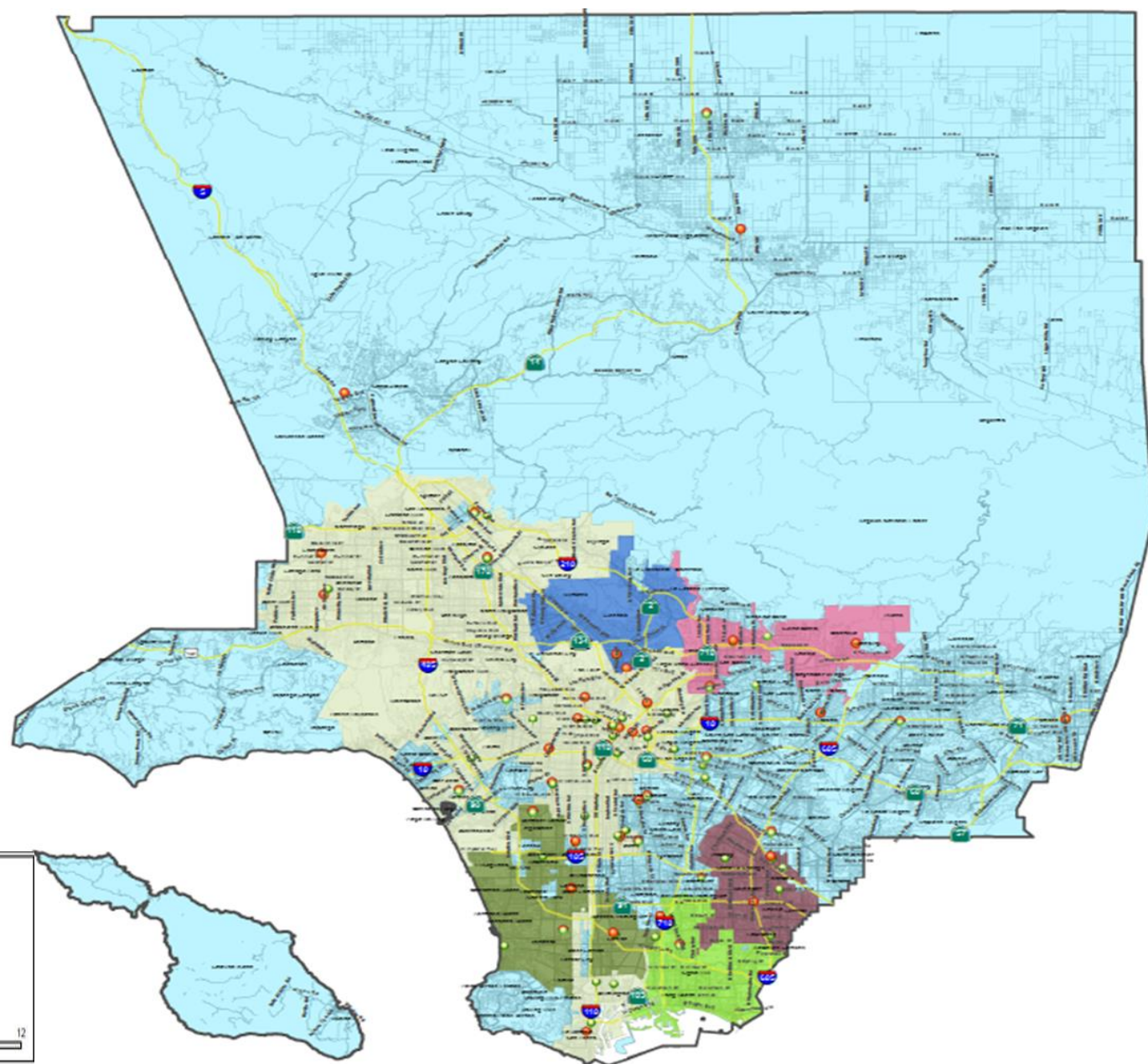
# Workforce Innovation and Opportunity Act (WIOA)

- WIOA is designed to help job seekers access employment, education, training, and support services to succeed in the labor market and to match employers with the skilled workers they need to compete in the global economy.
- WIOA brings together core federal workforce development programs, including:
  - Employment and training services for adults, dislocated workers, and youth; and Wagner-Peyser employment services.
  - Adult education and literacy programs and vocational rehabilitation programs to assist individual with disabilities in obtaining employment.



# Los Angeles County Local Workforce Development Areas (LWDA)

## Los Angeles County Workforce Development System Map



# LA County AJCC Public Contact Information



Los Angeles County  
America's Job Centers of California by  
Region



Antelope Valley	San Gabriel Valley	Santa Clarita
<p><b>Antelope Valley Comprehensive AJCC*</b> <i>Jobs. Vision. Success. SoCal. (JVS)</i> 1420 West Avenue I, Lancaster, CA 93534 Tel (661) 726-4128 TTY (661) 208-4484 Fax (661) 265-8723</p> <p><b>Palmdale AJCC*</b> <i>(Affiliate to Antelope Valley Comprehensive AJCC)</i> <i>Jobs. Vision. Success. SoCal. (JVS)</i> 38510 Sierra Hwy., Palmdale, CA 93550 Tel (661) 265-7421 TTY(661) 208-4484 Fax (661) 265-7491</p>	<p><b>East San Gabriel Valley Comprehensive AJCC*</b> <i>Goodwill</i> Hacienda La Puente Adult School 14101 E. Nelson Ave. La Puente, CA 91746 Tel (626) 934-5700 TTY (626) 934-5777 Fax (626) 934-5778</p> <p><b>Pomona Valley Comprehensive AJCC*</b> <i>Managed Career Solutions (MCS)</i> 1460 E. Holt Ave. Entrance #3 Pomona, CA 91767 Tel (909) 242-7999 TTY (909) 865-2835 Fax (909) 622-5402</p> <p><b>Alhambra AJCC*</b> <i>(Affiliate to East L.A./West San Gabriel Valley Comprehensive AJCC)</i> <i>Catholic Charities of Los Angeles (AYE)</i> 2550 W. Main St., Ste. 103, Alhambra, CA 91801 Tel (626) 677-2600 TTY (626) 284-8061 Fax (626) 677-2698</p> <p><b>West Covina AJCC*</b> <i>(Affiliate to Pomona Valley Comprehensive AJCC)</i> <i>Managed Career Solutions (MCS)</i> 933 South Glendora Ave., West Covina, CA 91790 Tel (626) 814-8234 TTY (626) 856-2129 Fax (626) 337-2564</p> <p><b>East L.A./West San Gabriel Valley Comprehensive AJCC*</b> <i>Catholic Charities of Los Angeles (AYE)</i> 5301 Whittier Blvd. 2<sup>nd</sup> Floor, Los Angeles, CA 90022 Tel (323) 887-7122 TTY (323) 832-1278 Fax (323) 887-8236</p> <p><b>Baldwin Park AJCC*</b> <i>(Affiliate to East San Gabriel Valley Comprehensive AJCC)</i> <i>Goodwill</i> Baldwin Park Adult School, ACT Center 4640 Maine Ave, Baldwin Park, CA 91706 Tel (626) 856-4125 TTY (626) 214-4577 Fax (626) 214-4988</p>	<p><b>Santa Clarita AJCC*</b> <i>Goodwill</i> 20730 Soledad Street, Santa Clarita, CA 91351 Tel (661) 298-0152 TTY (661) 298-7349 Fax (661) 251-5643</p>
Gateway Cities		Westside Cities
<p><b>Southeast L.A. Comprehensive AJCC*</b> <i>Hub Cities Consortium</i> 2677 Zoe Ave., 2<sup>nd</sup> Floor, Huntington Park, CA 90255 Tel (323) 586-4700 TTY (323)586-4707 Fax (323) 586-4702</p> <p><b>Rio Hondo Comprehensive AJCC*</b> <i>Southeast Area Social Services Funding Authority (SASSFA)</i> 10400 Pioneer Blvd., Suite 9, Santa Fe Springs, CA 90670 Tel (562) 946-2237 TTY (562) 236-2899 Fax (562) 946-3818</p> <p><b>Rancho Dominguez Comprehensive AJCC*</b> <i>Community Career Development (CCD)</i> 2909 E. Pacific Commerce Dr., Compton, CA 90221 Tel (310) 762-1101 TTY (310) 762-1283 Fax (310) 762-1129</p> <p><b>Slawson AJCC*</b> <i>(Affiliate to Southeast L.A. Comprehensive AJCC)</i> <i>Hub Cities Consortium</i> Richard N. Slawson Southeast Occupation Center 5500 Rickenbacker Rd., Room A201, Bell, CA 90201 Tel (323) 729-6400 TTY (323) 729-6455 Fax (323) 729-6451</p> <p><b>Willowbrook AJCC*</b> <i>(Affiliate to Rancho Dominguez Comprehensive AJCC)</i> <i>Community Career Development (CCD)</i> Willowbrook Library 11737 Wilmington Ave, Los Angeles, CA 90059 Tel (323) 564-5021 TTY (323) 337-3819 Fax (323) 967-7702</p> <p><b>Whittier AJCC*</b> <i>(Affiliate to Rio Hondo Comprehensive AJCC)</i> <i>Southeast Area Social Services Funding Authority (SASSFA)</i> Whittier Adult School, Room B210 9401 Painter Ave. Whittier, CA 90605 Tel (562) 907-6995 TTY (888) 599-0128 Fax (562) 684-4414</p>		<p><b>West Los Angeles AJCC*</b> <i>Jobs. Vision. Success. SoCal. (JVS)</i> 5446 Sepulveda Blvd., Culver City, CA 90230 Tel (310) 309-6000 TTY (310) 301-7083 Fax (310) 301-2519</p>
	Central L.A.	
	<p><b>Veterans AJCC**</b> <i>Jobs. Vision. Success. SoCal. (JVS)</i> <b>Temporary Re-location Due to Covid-19 Closure</b> 1180 Durfee Ave. S. El Monte, CA 91733 Tel (213) 742-9560 TTY (213) 743-1423 Fax (323) 543-2427</p> <p><b>Permanent Location (currently closed)</b> 1816 South Figueroa Street, Los Angeles, CA 90015 Tel (213) 742-9560 TTY (213) 743-1423 Fax (323) 543-2427</p> <p><b>South L.A. AJCC*</b> <i>Catholic Charities of Los Angeles (AYE)</i> L.A. Southwest College, CTE Bldg., Room 115 1600 West Imperial Hwy. Los Angeles, CA 90047 Tel (323) 241-5016 TTY (323) 923-4822 Fax (323) 923-4824</p>	
	San Fernando Valley	
	<p><b>Northeast San Fernando Valley AJCC*</b> <i>Goodwill</i> 12502 Van Nuys Blvd. Pacoima, CA 91331 Tel (818) 482-1754</p>	

\* AJCC offers Adult and Youth Programs \*\* Veterans AJCC offers Adult & Dislocated Worker Programs to Veterans Only  
 WDACS and the Los Angeles County America's Job Centers of California are equal opportunity employers/programs. Auxiliary aids and services are available upon request to individuals with disabilities. Updated on 10/13/2021



Grow. Succeed. Thrive.



# LA County AJCCs – [ajcc.lacounty.gov](http://ajcc.lacounty.gov)

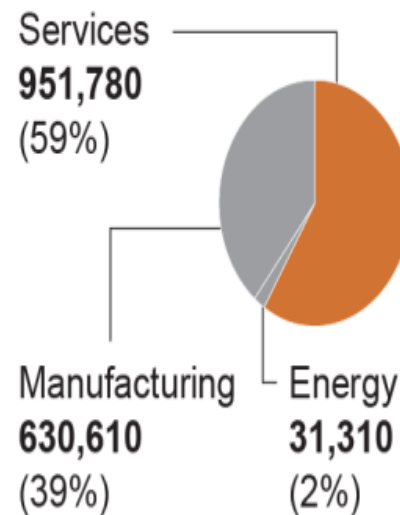


# High-Growth Sectors

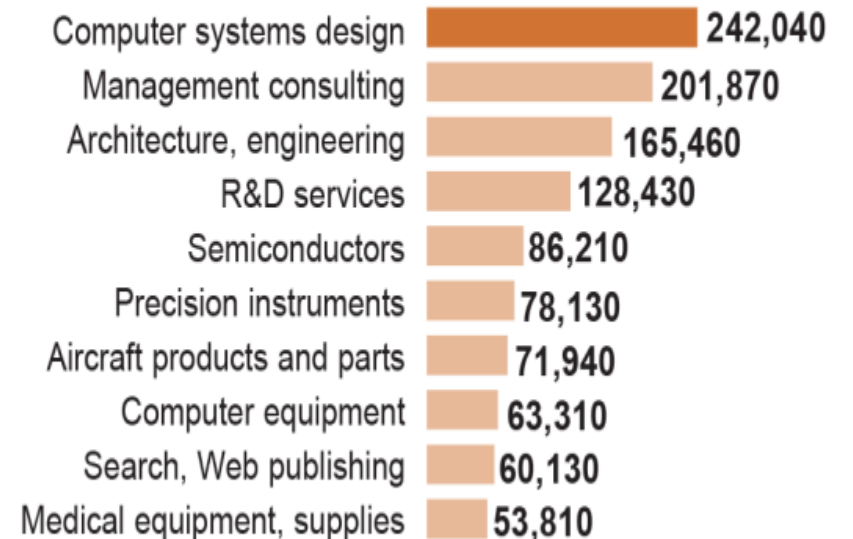
- Construction
- Transportation and Logistics
- Manufacturing
- Healthcare
- Bioscience
- Hospitality and Tourism
- Professional Services

## California's high-tech industries

### Total jobs



### Top industries



Source: Brookings Institution. Graphics reporting by Chris Kirkham Len De Groot / @latimesgraphics

# LA County Workforce System: Service Strategies & Objectives



**Personal Enrichment:  
Focus on Soft Skills**



**Work Experience**



**Barrier Mitigation**



**Educational Gains**



**Career Pathways**



**High Growth Industry Sector  
Training**



**Employer & Business  
Engagement**



**Placement in Living Wage Jobs  
with Upward Career  
Trajectory**

# LA County Workforce System: Priority & Target Service Populations



Homeless



Veterans



Low Income & Public Assistance Recipients



Foster Youth



Justice-Involved Populations



Basic Skills Deficient



LGBTQ



Disconnected Youth

# LA County Workforce System: Core Programs



**Adult and  
Dislocated  
Worker**



**Youth@Work**



**Rapid Response**  
*(Countywide, Operated  
from 3 AJCC Hubs)*



**Senior Community Service  
Employment Program**  
*(Countywide, Operated  
from 3 AJCC Hubs)*



# Thank you!

- Questions
- Aravinda Edussuriya – [aedussuriya@wdac.lacounty.gov](mailto:aedussuriya@wdac.lacounty.gov)





# Reflection into Action

Please share a **key takeaway** that you will put into action.

# 2021/2022 CTE Professional Development Series



2020 CTE Symposium @ Glendale Community College  
[IMAGO](#)

**Thursday, December 2, 2021**

**1:00 pm – 3:00 pm**

**Foster Youth, Homeless Youth, and CTE**  
*(registration link coming soon)*

**Thursday, December 9, 2021**

**10:00 am – 11:00 am**

**“It’s About Time”**

**Advisory Committees**

**Thursday, January 6, 2022**

**10:00 am – 12:00 noon**

**21<sup>st</sup> Century CTE Careers Symposium**

**Energy, Environment, and Utilities**

**Metropolitan Water District of Southern  
California**

**Wednesday, January 26, 2022**

**Annual CTE Symposium**

*(registration link coming soon)*

# CTE Newsletter

- Student Opportunities
- Lights! Camera! Action!
- “Spotlight”
- Coordinator’s Corner
- K-12 Strong Workforce
- LACOE Staff
- CTE Professional Development Calendar



Page 2 Volume 2, Issue 1

**Coordinator's Corner**  
Gina M. Newton, Ph.D., CTE Coordinator II  
2021/2022 CTE Professional Development Series

We are honored to introduce and invite you to attend our 2021/2022 CTE Professional Development Series. These events consider several factors that directly affect your CTE journey as well as professional and student opportunities that will strengthen your journey with another year of impactful learning.

Included in this 2021/2022 series are collaborations with LACOE Data Literacy to reinforce our approach to challenges from both the affective and effective domains; industry partners to showcase emerging factors of this sector; and LACOE partners to address the needs of some of our most vulnerable and adversely impacted student populations (Latinx, special education, migrant, and African American learners).

Returning as the *1st Alert Time* series beginning monthly in October, the Annual CTE Symposium, the 198 Annual Middle School College & Career CTE Symposium, and the DEIA Symposium. Yes, it's in there!

September and October PDs are shared on Page 4 while the full calendar series can be found by clicking [2021/2022 CTE Professional Development Series](#).

We look forward to seeing you again, sharing conversations, and working together to serve students and support communities.

Page 3 Volume 2, Issue 1

**CTE Credential Update!**  
Linda Mateck, CTE Coordinator II  
Credential Fee Waiver & CCTC Basic Skill Requirement

**The Credential Fee Waiver for Designated Subjects CTE Preliminary Credentials:**

The 2021-22 California state budget includes \$20 million to provide a credential fee waiver between July 1, 2021 and June 30, 2022 for individuals entering the PK-12 educator workforce. The funds can be applied to an applicant's initial application for the credentials and permits, see CCTC Coded Correspondence 21-04 for Credentials and Permits eligible for fee waiver.

**CCTC Basic Skill Requirement (CL-907) Meet the Basic Skills Requirement by Competency:**

Individuals may meet the requirement by providing official transcripts to a Commission-approved preparation program or submit them with their application packet to the Commission. The transcripts must show passage of courses in reading, writing, and mathematics as outlined below. Courses must have been taken at a regionally-accredited college or university for credit, passed with a grade of B or better, be degree applicable, and be either 3 semester or 4 quarter units. Qualifying coursework does not include professional development, continuing education units, or in-service training or workshops. Qualifying coursework includes the following:

Reading proficiency: A course in composition, English, rhetoric, written communication, or written analysis.

Writing proficiency: A course in composition, English, rhetoric, written communication, or written analysis.

Mathematics proficiency: A course in algebra, geometry, mathematics, quantitative reasoning, or statistics.

For more information about CTE Credentialing, contact **Laura Dominggo**, CTE & Adult Education Credential Specialist (562) 922-6798.

Page 4 Volume 2, Issue 1

**LACOE Office of CTE Staff**

The Los Angeles County Office of Education (LACOE) Office of Career Technical Education (CTE) is here to assist you with your technical assistance, credentialing, professional development, and program needs.

<b>Reina Flores-Hansen, M.Ed.</b> CTE Project Director III (562) 922-6243	<b>Christina Fuentes</b> CTE & Adult Education Credential Specialist (562) 922-6744	<b>Gina M. Newton, Ph.D.</b> CTE Coordinator II (562) 922-6709	<b>Rosa Valdes</b> CTE Contract Accountant (562) 922-6850
<b>Sibylla P. Akra</b> CTE Division Secretary (562) 922-6850	<b>Sheila Lewis, M.S.</b> CTE Administrative Analyst (562) 922-6324	<b>Anne Walsh-Treglia, Ed.D.</b> CTE Coordinator II (562) 922-6541	<b>Nancy Wagner, Ed.D.</b> CTE Contract Accountant (562) 922-6335
<b>Lacey Dominggo</b> CTE & Adult Education Credential Specialist (562) 922-6798	<b>Linda Mateck</b> CTE Coordinator II (562) 922-6798		

**CTE Professional Development Series 2021/2022 Calendar**

**Tuesday, Sept. 28, 2021**  
New CTE Teacher Classroom Management Part I

**Thursday, Oct. 7, 2021**  
Focus on the College & Career Indicators (CCI): Data Literacy – Session One

**Thursday, Oct. 14, 2021**  
*1st Alert Time* CTE Webinar Series: Equity and a CTE High Quality Curriculum

**Wednesday, Oct. 20, 2021**  
21st Century Careers Symposium: Industry Sectors: Energy, Environment, and Utilities, Building & Construction Trades

**The September 15th, 2021 New CTE Teacher Survival (Part One) Workshop**

[Click here to view archived LACOE CTE events.](#)

Please share your views, celebrations, professional development events, and student opportunities:  
Email: [Gina.M.Newton,PhD](mailto:Gina.M.Newton,PhD), Subject line: "Newsletter."

Page 5 Volume 2, Issue 1

**SPOTLIGHT: LA Metro Transportation Careers Academy Program (TCAP) Summer 2021 Student Internship**  
Gina M. Newton, Ph.D., CTE Coordinator II

Summer 2021 marks the second successful *senior student* internship opportunity under the direction of **Reina Flores-Hansen**, Director, CTE & Organizational Learning of Transportation Equity/Next Generation Educator Programs at LA Metro.

LACOE CTE Newsletter will feature a 2019 LA County Office of Education CTE graduate, **Enesto Ortiz-Zamora**, who received a \$1,000 scholarship grant to the school of their choice: acceptance into the **Class of 2019, Gladstone High School, Azusa USD** near State Street, University of Southern California, Los Angeles for Mechanical Engineering (Petroleum Engineering) Minor: Digital Entrepreneurship.

Enesto Ortiz-Zamora is our first featured 2019 CTE Scholarship Recipient in this series. While a student at Gladstone High School in Azusa USD, Enesto was enrolled in Information Technology Graphic Arts. He credits his school CTE teachers, Mr. [Name] and Mr. [Name], for being his "angels" for his HS graduation endeavors and successful students take CTE to "build valuable technical skills as an ever-evolving, proactive job market."

The \$1,000 CTE scholarship fund Enesto is paying for his books during his first and second semesters of college, which he said, "went a long way as a first-generation, minority student enrolled in a cost-intensive major."

Along this journey, Enesto persevered through hardships that included being felled out of his freshman dorm and forced to relocate during his lowest semester, enrolling in a calculus course, struggling consistently with unmet needs, depression, loneliness, and anxiety attacks, as well as a fear of letting down his loved ones. Each of these obstacles, trials, and tribulations served to strengthen his resolve as a student in STEM, his self-confidence, and above all, his humanity.

When asked what he wished he had learned in high school that might have better prepared him for college, he stated: "Being better prepared for the SAT subjects tests as well as more opportunities to develop my understanding of physics, calculus, and computer science."

The next steps in Enesto's educational journey are to continue the pursuit of his Bachelor's degree in mechanical engineering while developing the next great application as a digital entrepreneur. In addition to tackling his academics, Enesto is employed at Vanets Center of Engineering Diversity.

We salute, encourage, and congratulate Enesto on his continued success!



# Career Technical Education (CTE) Team UNITE

## Reina Flores-Hansen

**Project Director III**  
**(562) 922-6243**

## Silvia P. Alva

Division Secretary  
(562) 922-6850

## Lucy Domingo

CTE & AE  
Credential Specialist  
(562) 922-6798

## Christina Fuentes

CTE & AE Credential  
Specialist  
(562) 922-6744

## Linda Matzek

Coordinator II  
(562) 922-6798

## Gina M. Newton, Ph.D.

Coordinator II  
(562) 922-6709

## Sheila Lewis, M.S.

Administrative Analyst  
(562) 922-6324

## Anne Welsh-Treglia, Ed.D.

Coordinator II  
(562) 922-6541

## Rosa Valdez

Contract Consultant  
(562) 922-6850

## Nancy Wagner, Ed.D.

Contract Consultant  
(562) 922-6335

The Los Angeles County Office of Education Office of Career Technical Education is here to assist you with your credentialing, professional development, and program needs.  
We look forward to continued opportunities to collaborate.

~The LACOE CTE Team

[Reina Flores-Hansen, M.Ed.](#)

Project Director III

562-922-6243



**Los Angeles County  
Office of Education**



[Gina M. Newton, PhD](#)

CTE Coordinator II

562-922-6709



Office of Career Technical Education

**It's About Time!**

*Delete the Divide*

Thursday, November 18, 2021

