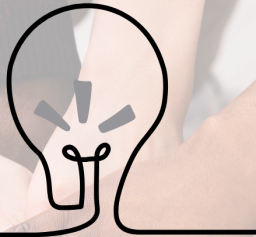




SPOTLIGHT

**ON ACCESS****NEWS THIS MONTH**

Month of October:

ADHD Awareness Month

Down Syndrome Awareness Month

Dyslexia Awareness Month

Oct. 6, 2025 World Cerebral Palsy Awareness

Oct. 10, 2025 World Mental Health Day

**UPCOMING FREE PD**Oct. 22 & 29, 2025 - Accessibility Supports for All: A Two Part Workshop: [Link](#)Nov. 4, 2025 - Intro to SpEd Basics: [Link](#)Nov. 18, 2025 - Sensory Strategies in the Classroom: [Link](#)**LACOE Special Education Professional Development Calendar: [Link](#)**

The LACOE Division of Special Education has created its full year professional development calendar. Specialized sessions for special education directors, coordinators and charter school administrators are available. General sessions such as transition, behavior and accommodations are also available.

**CRADLE TO CAREER**

The California Cradle to Career Data System creates a data story for every district in CA. The tool shows districts the educational pathways that their students take after high school. Future versions of the tool will capture data on the teacher training and retention rates.

For more information: [Link](#)**FOSTER YOUTH WAIVERS**

Students who have not completed high school have two program options. The California Proficiency Program (CPP) is for students age 16+ and enrolled in high school. The High School Equivalency (HSE) program is for students who are 18 years of age who are not enrolled. Both programs qualify for a fee waiver for foster youth.

For more information: [Link](#)**RICA RETIREMENT**

Senate Bill 488 has retired the Reading Instruction Competence Assessment (RICA). Candidates are now able to select from three different tests: California Teaching Performance Assessment (CalTPA), Educative Teacher Performance Assessment (edTPA), and the Fresno Assessment of Student Teachers (FAST).

For more information: [Link](#)**LONG-TERM ENGLISH LEARNER (LTEL) AND THE DASHBOARD**

On August 8, 2025, Tony Thurmond gave updates on the California School Dashboard. One significant area of change is how the Dashboard will calculate Long-Term English Learners.

Performance on English Language Arts (ELA) and Math are now excluded in the performance calculation. Instead, Priority 4 will now include both orange and red (rather than just red) districts on the dashboard. Based on the new changes, LACOE is expecting a significant drop in district eligibility with a very modest increase due to the new criteria.

For more information: [Link](#)**J.R. V. VENTURA UNIFIED SCH. DIST.**

The statute of limitations for special education violations are generally two years. However, limitations can be pierced if the LEA made misrepresentations or withheld information that was required to be provided to the parent.

In this particular case, the court found a denial of FAPE all the way back to 2012.

Districts should meet with their district and site teams to ensure that they are meeting all IEP obligations for FAPE.

For more information: [Link](#)<https://bit.ly/LACOESPED>To be added to the newsletter email list, sign up here: [Link](#)